

thor

A  MIDDLEBY Company

thor

燃气产品手册



关注公众微信号
了解更多资讯

这就是创新 这就是美得彼
www.middleby.com.cn

美得彼餐饮设备（上海）有限公司
上海市闵行区沪闵路3888号汉生科技园1号楼105-109室
邮编：201108
电话：021-3323 9898



 THE MIDDLEBY CORPORATION



THE MIDDLEBY CORPORATION

(NASDAQ : MIDD)

Middleby是一家全球领先的**商业厨房设备、民用厨房设备、食品加工与处理设备的制造商**。三个业务部门拥有超过90个世界知名品牌。

Middleby is one of the world's leading manufacturers of commercial kitchen equipment, civilian kitchen equipment, and food processing equipment. There are more than 90 world famous brands in the three business units.

Middleby 中国聚焦品牌



thor

A MIDDLEBY Company

品牌介绍

Brand Introduction

从2001年推出Thor帕尼尼烧烤架以来，Thor烹饪设备已经发展成为广泛的商业烹饪解决方案。Thor通过将简单的设计与卓越的制造工艺相结合，在商业餐饮设备中实现价值。通过提供高水平的工艺和高质量的部件，我们以卓越的性能和质量支持我们的价值。

美得彼餐饮设备公司致力于为客户提供全面满意的服务。通过提供广泛的燃气和电气台面和独立的烹饪设备，Thor能够为您的商业厨房需求提供一个全面的解决方案。

产品包括:三文治机,电烤炉,链式多士炉,热狗机,电扒炉,加热设备,燃气烤炉,燃气灶,炸炉,面火炉,烤箱等。

Thor了解商业厨房的需求,致力于为您提供最高质量的产品和尽可能低的价格。效率,盈利能力和可靠性是厨房成功的关键,我们保证你不会对Thor失望。

From the launch of the thor panini grill in 2001, thor cooking equipment has developed into a broad range of commercial cooking solutions. Thor delivers value in commercial foodservice equipment by combining simplistic design with superior manufacturing processes. We back up our value with exceptional performance and quality by providing high level workmanship and high quality componentry.

Middleby food service equipment is committed to providing total customer satisfaction. By offering an extensive range of gas and electrical counter-top and freestanding cooking equipment, thor is able to provide a total solution to your commercial kitchen needs.

Contact grills, toaster grills, conveyor toasters, hot dog rollers, griddles, warming equipment, char broilers, hot plates, fryers, salamanders, ovens.

Thor knows the demands of the commercial kitchen and is committed to providing you with the highest quality product and the lowest possible price. Efficiency, profitability and reliability are the key to a successful kitchen and we guarantee you will not be disappointed in thor.



▲ 美得彼餐饮设备（珠海）有限公司



▲ 车间一角



▲ 仓库



▲ 激光切割、数控冲切设备





PRODUCT CONTENTS

美得彼产品目录

1-2

燃气烤炉系列
Gas char broilers

3-4

燃气扒炉系列
Gas Griddle

5

燃气灶系列
Gas Hot Plate

6

落地式燃气炸炉 面火炉
Gas Freestanding Fryer
Gas Salamander

7-8

落地式燃气烤箱灶系列
Gas oven

台式燃气烤炉 Gas char broilers



型号 Model	炉头 Open Burners	热功率 kw	烹饪区域 Capacity/Cooking Area	耗气量 Gas Consumption		净重 N KG	规格 Dimensions(mm)
				天然气 NG 2000pa(m³/h)	液化气 LPG 2800-3000Pa (kg/h)		
CBR15F	1	8.8kw	380x508mm	0.81	0.65	46.5	380(W)x835(D)x550(H)
CBL15F	1	8.8kw	380x508mm	0.81	0.65	46.5	380(W)x835(D)x550(H)
CBR24F	2	2x8.8kw	610x508mm	1.63	1.30	70	610(W)x835(D)x550(H)
CBL24F	2	2x8.8kw	610x508mm	1.63	1.30	70	610(W)x835(D)x550(H)
CBR36F	3	3x8.8kw	915x508mm	2.44	1.95	103	915(W)x835(D)x550(H)
CBL36F	3	3x8.8kw	915x508mm	2.44	1.95	103	915(W)x835(D)x550(H)
CBR48F	4	4x8.8kw	1220x508mm	3.26	2.60	123	1220(W)x835(D)x550(H)
CBL48F	4	4x8.8kw	1220x508mm	3.26	2.60	123	1220(W)x835(D)x550(H)

特点

- 不锈钢结构及表面处理
- 重型铸铁栅格烤架
- 手动控制，独立的烹饪区域
- 母火展示
- 坚固的金属旋钮
- 重型铸铁辐射结构
- 不锈钢炉头
- 燃烧器安全阀
- 活动废弃物托盘
- 重型可调脚
- 3/4接头外接气源

可选特点

- 无火焰
- 全尺寸后烟道防护罩
- 重型钢辐射结构
- 熔岩及支架

Features

- Stainless steel construction and finish
- Heavy duty cast iron grilling grates
- Manually controlled, independent cooking zones
- Standing pilot light
- Large, robust dial controls
- Heavy duty cast radiant as standard
- Stainless steel burners
- Burner safety valves
- Removable full width waste tray
- Heavy duty adjustable feet
- 3/4" rear gas connection

Optional Features:

- Flame failure
- Full size back flue guard
- Heavy duty steel radiant
- Lava rock + rack



立式燃气烤炉 Gas char broilers



型号 Model	炉头 Open Burners	热功率 kw	烹饪区域 Capacity/Cooking Area	耗气量 Gas Consumption		净重 N KG	规格 Dimensions(mm)
				天然气 NG 2000pa(m³/h)	液化气 LPG 2800-3000Pa (kg/h)		
SCBR15F	1	8.8kw	380x508mm	0.81	0.65	51.5	380(W)x835(D)x1170(H)
SCBR24F	2	2x8.8kw	610x508mm	1.63	1.30	76	610(W)x835(D)x1170(H)
SCBR36F	3	3x8.8kw	915x508mm	2.44	1.95	112	915(W)x835(D)x1170(H)
SCBR48F	4	4x8.8kw	1220x508mm	3.26	2.60	133	1220(W)x835(D)x1170(H)
SCBL48F	4	4x8.8kw	1220x508mm	3.26	2.60	133	1220(W)x835(D)x1170(H)

特点

- 不锈钢结构及表面处理
- 重型铸铁栅格烤架
- 手动控制，独立的烹饪区域
- 母火展示
- 坚固的金属旋钮
- 重型铸铁辐射结构
- 不锈钢炉头
- 燃烧器安全阀门
- 活动废弃物托盘
- 重型可调脚
- 3/4接头外接气源

可选特点

- 无火焰
- 全尺寸后烟道防护罩
- 重型钢辐射结构
- 熔岩及支架

Features

- Stainless steel construction and finish
- Heavy duty cast iron grilling grates
- Manually controlled, independent cooking zones
- Standing pilot light
- Large, robust dial controls
- Heavy duty cast radiant as standard
- Stainless steel burners
- Burner safety valves
- Removable full width waste tray
- Heavy duty adjustable feet
- 3/4" rear gas connection

Optional Features:

- Flame failure
- Full size back flue guard
- Heavy duty steel radiant
- Lava rock + rack



台式燃气扒炉 Gas Griddle



型号 Model	炉头 Open Burners	热功率 kw	烹饪区域 Capacity/Cooking Area	耗气量 Gas Consumption		净重 N KG	规格 Dimensions(mm)
				天然气 NG 2000pa(m³/h)	液化气 LPG 2800-3000Pa (kg/h)		
G15F	1	8.8kw	380x508mm	0.81	0.65	51	381(W)*835(D)*550(H)
G24F	2	2x8.8kw	610x508mm	1.63	1.30	75	610(W)*835(D)*550(H)
G36F	3	3x8.8kw	915x508mm	2.44	1.95	108.5	915(W)*835(D)*550(H)
G48F	4	4x8.8kw	1220x508mm	3.26	2.60	139	1220(W)*835(D)*550(H)

特点

- 光滑的钢板烹饪表面
- 重型铸铁栅格烤架
- 手动控制，独立的烹饪区域
- 母火展示
- 坚固的金属旋钮
- 重型铸铁辐射结构
- 不锈钢炉头
- 燃烧器安全阀门
- 活动废弃物托盘
- 重载可调脚
- 3/4接头外接气源

选用配置

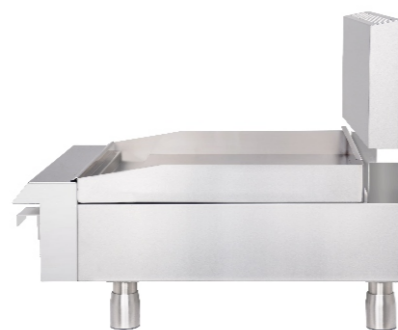
- 熄火保护功能
- 全尺寸后烟道防护罩
- 重型钢辐射结构
- 熔岩及支架

Features

- Stainless steel construction and finish
- Heavy duty cast iron grilling grates
- Manually controlled, independent cooking zones
- Standing pilot light
- Large, robust dial controls
- Heavy duty cast radiant as standard
- Stainless steel burners
- Burner safety valves
- Removable full width waste tray
- Heavy duty adjustable feet
- 3/4" rear gas connection

Optional Features:

- Flame failure
- Full size back flue guard
- Heavy duty steel radiant
- Lava rock + rack



立式燃气扒炉 Gas Griddle



型号 Model	炉头 Open Burners	热功率 kw	烹饪区域 Capacity/Cooking Area	耗气量 Gas Consumption		净重 N KG	规格 Dimensions(mm)
				天然气 NG 2000pa(m³/h)	液化气 LPG 2800-3000Pa (kg/h)		
SG15F	1	8.8kw	380x508mm	0.81	0.65	56.5	380(W)*835(D)*1185(H)
SG24F	2	2x8.8kw	610x508mm	1.63	1.30	80.5	610(W)*835(D)*1185(H)
SG36F	3	3x8.8kw	915x508mm	2.44	1.95	116	915(W)*835(D)*1185(H)

特点

- 不锈钢结构和表面处理
- 光滑的钢板烹饪表面
- 手动控制，独立的烹饪区域
- 母火展示
- 坚固的金属旋钮
- 不锈钢炉头
- 燃烧器安全阀门
- 可拆卸的托盘
- 重载可调脚
- 3/4"后气体连接

可选功能:

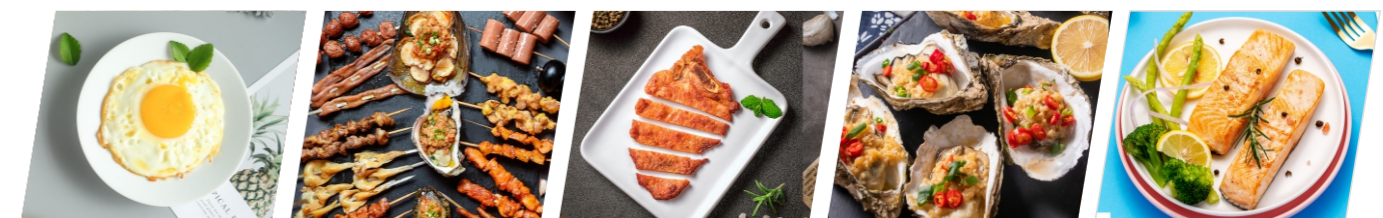
- 温控阀
- 熄火保护功能
- 全尺寸后烟道防护罩
- 立式支架

Features

- Stainless steel construction and finish
- Polished steel cooking surface
- Manually controlled, Independent cooking zones
- Standing pilot light
- Large, robust dial controls
- Stainless steel burners
- Burner safety valves
- Removable waste tray
- Heavy duty adjustable feet
- 3/4" rear gas connection

Optional Features:

- Thermostat control valve
- Flame failure
- Full size back flue guard
- Stand with undershelf



台式燃气灶 Gas Hot Plate



型号 Model	炉头 Open Burners	热功率 kw	烹饪区域 Capacity/Cooking Area	耗气量 Gas Consumption		净重 N KG	规格 Dimensions (mm)
				天然气 NG 2000pa(m³/h)	液化气 LPG 2800-3000Pa (kg/h)		
HP212F	2	2x8.8kw	380x508mm	1.63	1.30	28	305(W)*835(D)*550(H)
HP424F	4	4x8.8kw	610x508mm	3.26	2.60	57.5	610(W)*835(D)*550(H)
HP636F	6	6x8.8kw	915x508mm	4.86	3.90	79	915(W)*835(D)*550(H)

- 特点**
- 不锈钢结构和表面处理
 - 重型铸铁炉架
 - 手动控制，独立烹饪区域
 - 母火展示
 - 坚固的金属旋钮
 - 燃烧器安全阀
 - 可拆卸废弃物托盘
 - 大载重不锈钢可调脚
 - 3/4"接头外接气源
 - 可选功能：
 - 全尺寸后烟道防护罩

- Features**
- Stainless steel construction and finish
 - Heavy duty cast iron trivets
 - Manually controlled, independent cooking zones
 - Standing pilot light
 - Large, robust dial controls
 - Burner safety valves
 - Removable full width waste tray
 - Heavy duty adjustable feet
 - 3/4" rear gas connection
 - Optional Features:
 - Full size back flue guard

立式燃气灶 Gas Hot Plate



型号 Model	炉头 Open Burners	热功率 kw	烹饪区域 Capacity/Cooking Area	耗气量 Gas Consumption		净重 N KG	规格 Dimensions (mm)
				天然气 NG 2000pa(m³/h)	液化气 LPG 2800-3000Pa (kg/h)		
SHP212F	2	2x8.8kw	305x508mm	1.63	1.30	33	305(W)*835(D)*1170(H)
SHP424F	4	4x8.8kw	610x508mm	3.26	2.60	64.5	610(W)*835(D)*1170(H)
SHP636F	6	6x8.8kw	915x508mm	4.86	3.90	87.5	915(W)*835(D)*1170(H)

- 特点**
- 不锈钢结构和表面处理
 - 重型铸铁炉架
 - 手动控制，独立烹饪区域
 - 母火展示
 - 坚固的金属旋钮
 - 燃烧器安全阀
 - 可拆卸废弃物托盘
 - 大载重不锈钢可调脚
 - 3/4"接头外接气源
 - 可选功能：
 - 全尺寸后烟道防护罩
 - 立式支架

- Features**
- Stainless steel construction and finish
 - Heavy duty cast iron trivets
 - Manually controlled, independent cooking zones
 - Standing pilot light
 - Large, robust dial controls
 - Burner safety valves
 - Removable full width waste tray
 - Heavy duty adjustable feet
 - 3/4" rear gas connection
 - Optional Features:
 - Flame failure
 - Full size back flue guard
 - Stand with undershelf

落地式燃气炸炉 Gas Freestanding Fryer



型号 Model	炉头 Open Burners	热功率 kw	烹饪区域 Capacity/Cooking Area	耗气量 Gas Consumption		净重 N KG	规格 Dimensions (mm)
				天然气 NG 2000pa(m³/h)	液化气 LPG 2800-3000Pa (kg/h)		
F35	3	3x8.8kw	35lb	2.44	1.95	58.4	381(W)*835(D)*550(H)
F45	4	4x8.8kw	45lb	3.26	2.6	66	381(W)*835(D)*550(H)

- 特点**
- 带有不锈钢接管油腔
 - 不锈钢前门
 - 烟道导流板
 - 温控阀和热熄保护装置；带压电式点火器
 - 英维思恒温器：93°C-205°C和手动复位高温保护装置
 - 油炸槽的冷却区
 - 带功率8.8kW热交换不锈钢热管，热管选用数量：3或4
 - 不锈钢炸篮支撑架
 - 带红色塑料把手的镀镍炸篮

- Features**
- Stainless steel welded tube frying tank
 - Stainless steel front and s/s door
 - Top ledge and black splash and flue deflector
 - Thermostat valve and flame fail protected; with pilot burner and ignition
 - Invensys thermostat: 93°C-205°C and manual reset high limit device
 - Cool zone in fry tank
 - Efficient (30,000 BTU) heat exchange tubes with high heat baffles: 3, 4, 5 tube fryers available
 - Stainless steel basket hanger
 - Two nickel wire mesh nickel plated fry basket: red plastic coated handles

燃气面火炉 Gas Salamander



型号 Model	炉头 Open Burners	热功率 kw	烹饪区域 Capacity/Cooking Area	耗气量 Gas Consumption		净重 N KG	规格 Dimensions (mm)
				天然气 NG 2000pa(m³/h)	液化气 LPG 2800-3000Pa (kg/h)		
SM36	2	2x8.8kw	630X300mm	1.63	1.30	38.0	900(W)X520(D)X465(H)

- 特点**
- 900毫米宽
 - 不锈钢结构
 - 双高性能红外燃烧器
 - 双控燃烧器，带有易于使用的坚固的金属旋钮
 - 独立变量高到低燃烧器设置
 - 每个燃烧器上的熄火保护
 - 可拆卸的烧烤架，支架
 - 可拆卸的易于清洁的面包屑托盘
 - 提供壁式安装支架
 - 可选功能：
 - 用于台架安装脚

- Features**
- 900mm wide
 - Stainless steel finish
 - Dual high performance infrared burners
 - Dual controlled burners, with large easy to use control dials
 - Independent variable high to low burner settings
 - Flame failure protection on each burner
 - Removable grill rack system, rack supports
 - Removable easy-clean crumb tray
 - Wall mounting bracket supplied
 - Optional Features:
 - Feet for bench mount installation

落地式燃气烤箱灶 Gas oven 24"



型号 Model	炉头 Open Burners	热功率 kw	烹饪区域 Capacity/Cooking Area	耗气量 Gas Consumption		净重 N KG	规格 Dimensions(mm)
				天然气 NG 2000pa(m³/h)	液化气 LPG 2800-3000Pa (kg/h)		
4F	4+1	5x8.8kw	610x508mm	4.05	3.25	117.0	610(W)*835(D)*1175(H)
OG24F	2+1	3x8.8kw	610x508mm	2.43	1.95	134.5	610(W)*835(D)*1175(H)

特点

- 重型建筑
- 挡板高度216mm, 标准不锈钢
- 30000Btu铸铁开放式燃烧器
- 标准配置手动控制阀
- 加厚扒板、铸铁炉架
- 厚20mm, 扒板610mm
- 气体静态烤箱, 100 - 300°C恒温控制, 压电点火
- 烤箱尺寸500 (W) X600 (D) X350 (H), 2个烤网
- 下拉的门
- 不锈钢表面
- 不锈钢托盘
- 坚固的金属旋钮
- 大载重不锈钢可调脚
- 清洁方便, 服务方便
- 完全模块化
- 可选功能:
- 全尺寸后烟道防护罩
- 后方万向脚轮

Features

- Heavy-duty construction
- Splash back - 216mm high, stainless steel as standard
- 30000Btu cast iron open burners
- Manual control valves with standing pilot as standard
- Heavy-duty cooking plates and burner trivets
- 20mm thick, 610mm griddle plate
- Gas static oven, 100 - 300°C thermostatic control, piezo ignition
- Oven size - compact oven, 2 racks
- Drop down door
- Stainless steel exterior
- Stainless steel spill trays
- Large, robust dial controls
- Heavy duty adjustable feet
- Easy clean, easy service
- Fully modular
- Optional Features:
- Full size back flue guard
- Rear castors



落地式燃气烤箱灶 Gas oven 36"



型号 Model	炉头 Open Burners	热功率 kw	烹饪区域 Capacity/Cooking Area	耗气量 Gas Consumption		净重 N KG	规格 Dimensions(mm)
				天然气 NG 2000pa(m³/h)	液化气 LPG 2800-3000Pa (kg/h)		
6F	6+1	7x8.8kw	610x508mm	5.67	4.55	152	915(W)X835(D)X1175(H)
4F-G12F	4+1+1	6x8.8kw	610x508mm	4.86	3.90	165	915(W)X835(D)X1175(H)
2F-G24F	2+2+1	5x8.8kw	610x508mm	4.05	3.25	164	915(W)X835(D)X1175(H)
OG36F	3+1	4x8.8kw	610x508mm	3.26	2.60	179	915(W)X835(D)X1175(H)

特点

- 重型建筑
- 挡板高度216mm, 标准不锈钢
- 30000Btu铸铁开放式燃烧器
- 标准配置手动控制阀
- 加厚扒板、铸铁炉架
- 20mm厚, 305mm/610mm/915mm扒板
- 气体静态烤箱, 100 - 300°C恒温控制, 压电点火
- 烤箱大小600 (W) X600 (D) X350 (H), 2个烤网
- 下拉的门
- 不锈钢表面
- 不锈钢托盘
- 坚固的金属旋钮
- 大载重不锈钢可调脚
- 清洁方便, 服务方便
- 完全模块化
- 可选功能:
- 全尺寸后烟道防护罩
- 后方万向脚轮

Features

- Heavy-duty construction
- Splash back - 216mm high, stainless steel as standard
- 30000BTU cast iron open burners
- Manual control valves with standing pilot as standard
- Heavy-duty cooking plates and burner trivets
- 20mm thick, 305mm/610mm/915mm griddle plate
- Gas static oven, 100 - 300°C thermostatic control, piezo ignition
- Oven size - GN2/1,2 racks
- Drop down door
- Stainless steel exterior
- Stainless steel spill trays
- Large, robust dial controls
- Heavy duty adjustable feet
- Easy clean, easy service
- Fully modular
- Optional Features:
- Full size back flue guard
- Rear castors